

Community Consultative Committee – November Meeting

15 November 2023



WELCOME AND APOLOGIES



Welcome

Apologies

Declaration of interests

Confirmation of previous minutes

AGENDA



- 1. Actions from previous meeting**
- 2. Correspondence**
- 3. Operational update**
- 4. Approvals**
- 5. Business Arising**
- 6. Environmental Incidents / Non-compliances**
- 7. Environmental Performance**
- 8. Community Complaints & Enquiries**
- 9. Environmental Projects**
- 10. Mine Cottages Rehabilitation Update**

ACTIONS / BUSINESS ARISING FROM PREVIOUS MINUTES



Action / Business Arising	Action Owner	Update
Committee terms of reference, code of conduct and declaration of interest.	MMH	
Update on the Chain Valley Colliery Consent Consolidation Project	LM	Provided on Slide 11

CORRESPONDENCE



Correspondence since previous meeting

- 1/11/23 – email MMH to CCC TOR & updated DPE forms

‘MOVEMBER’



This November Delta Coal is proud to be spreading awareness for men's health issues such as mental health, prostate cancer and testicular cancer

Employees have been encouraged to join the 'Movember movement' and grow a 'Mo' for the cause.

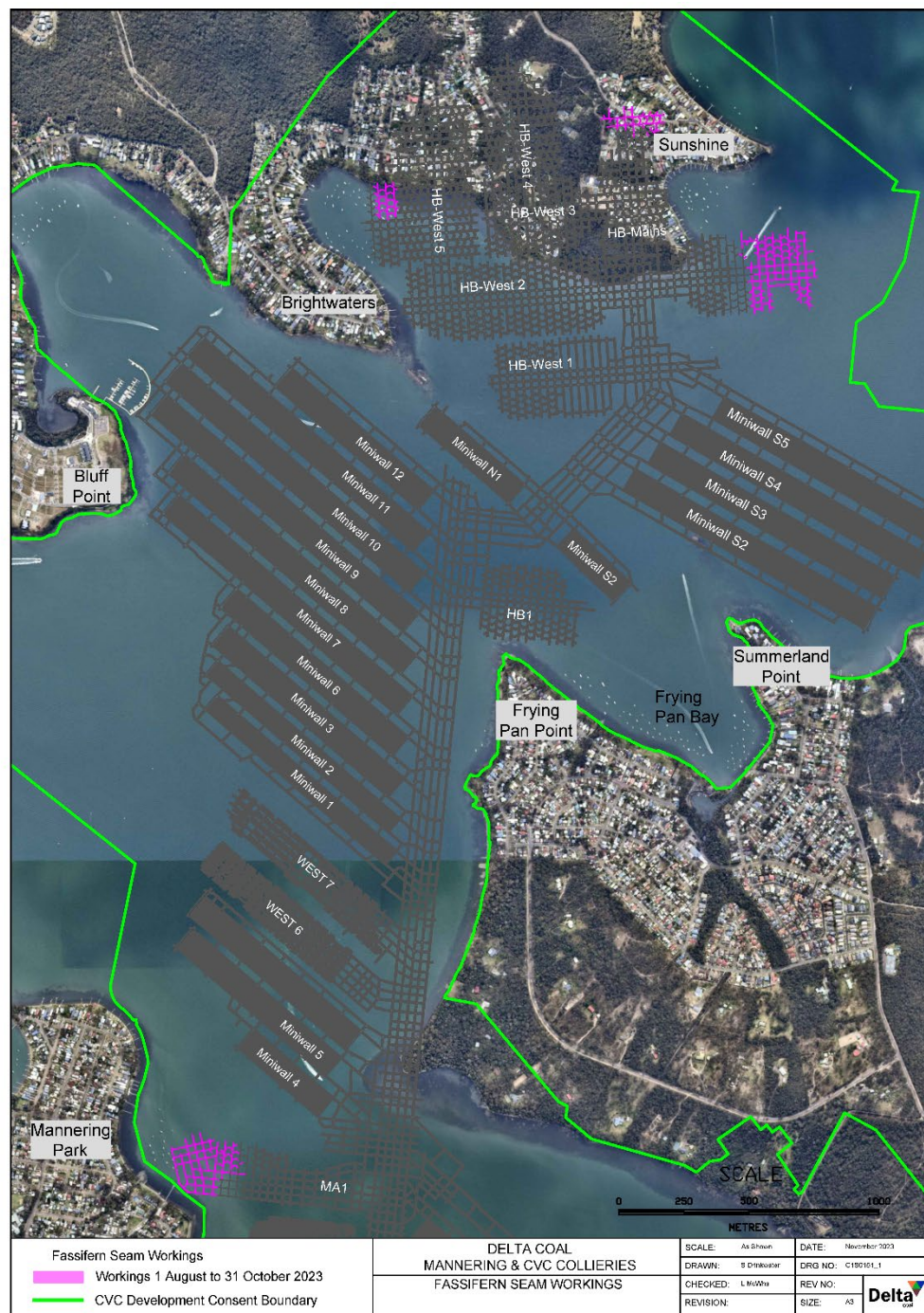
At the end of November Delta Coal will hold a fundraising BBQ where the best 'Mo' on shift will be crowned with a prize.



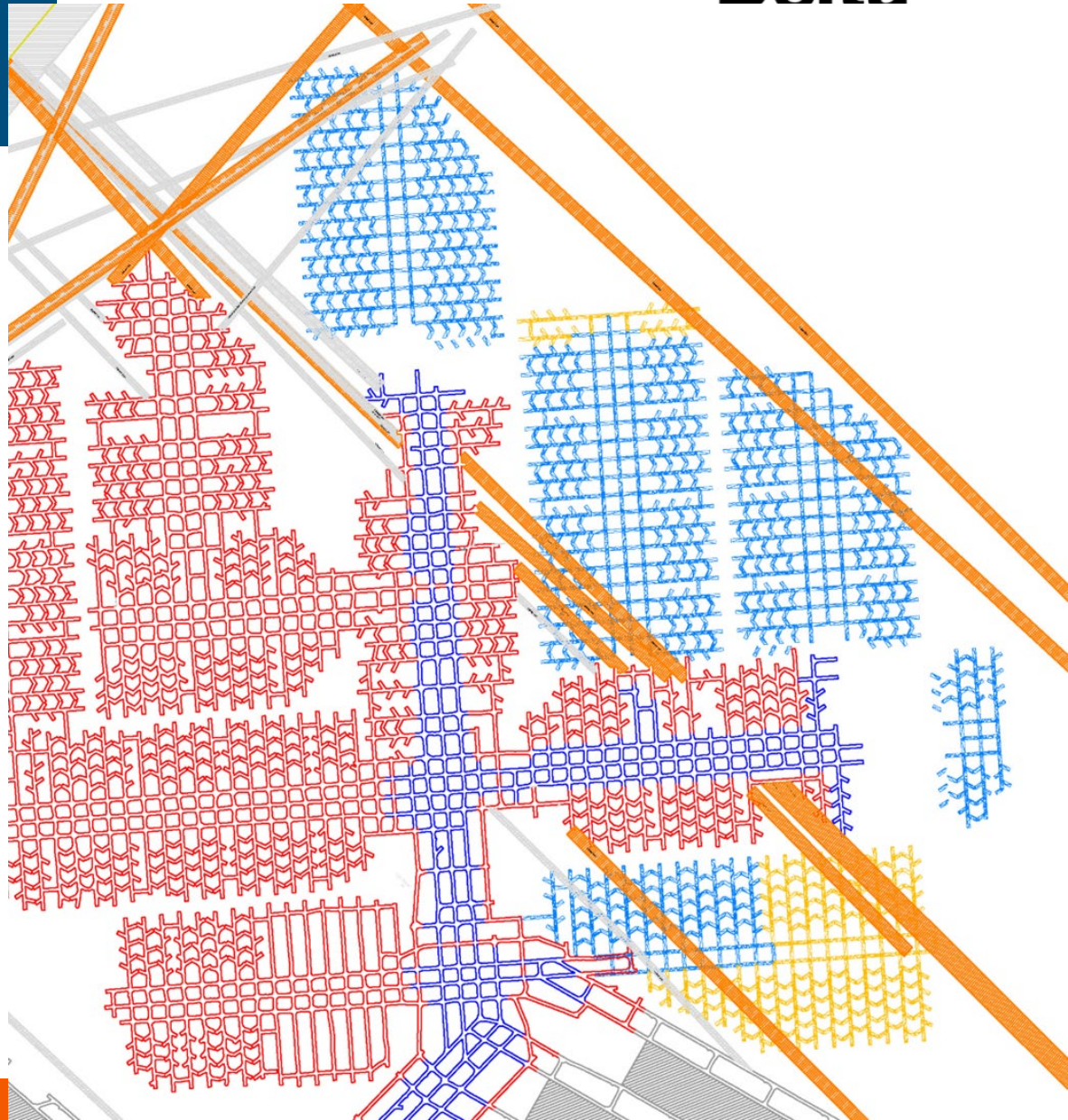
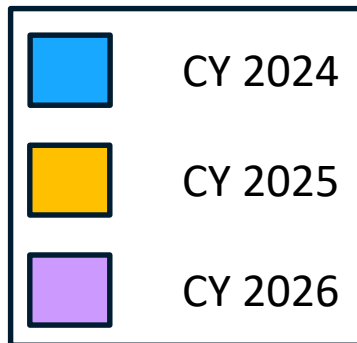
OPERATIONAL UPDATE

Production

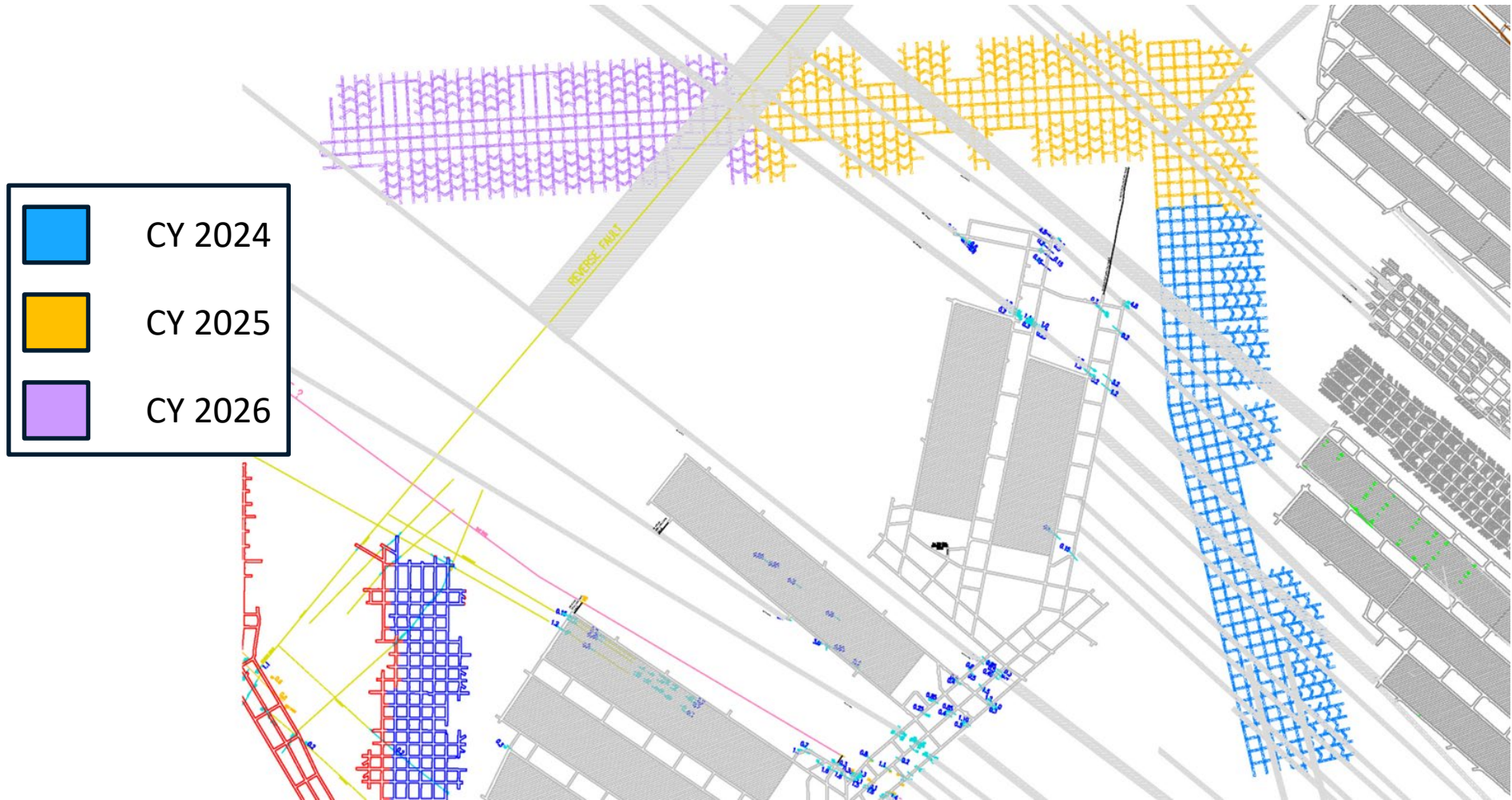
- Production panels relocated from W5. Production in Northern Mining Area continued in HB-Mains and E2 panels.
- MA1 drivage continues with first workings panels.
- Production 1 August 2023 to 31 October 2023 was 260 kt ROM Coal.
- All coal delivered to Power Station.



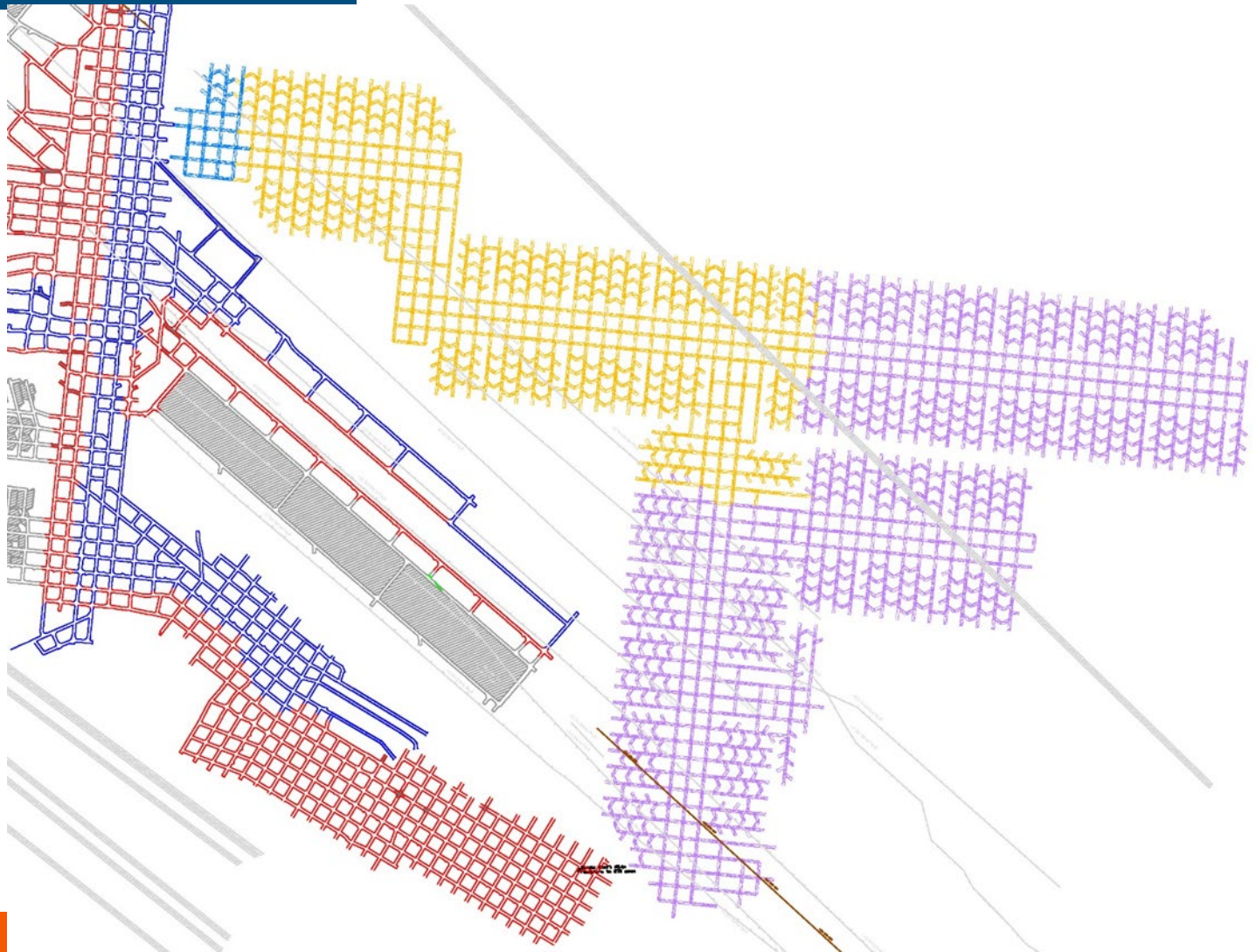
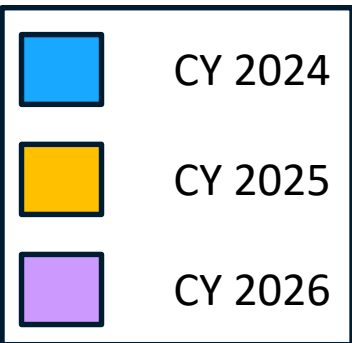
OPERATIONAL UPDATE FORWARD PLAN (*draft*) NMA



OPERATIONAL UPDATE FORWARD PLAN (*draft*) MA



OPERATIONAL UPDATE FORWARD PLAN (*draft*) CVB



Current Approvals

Chain Valley Colliery

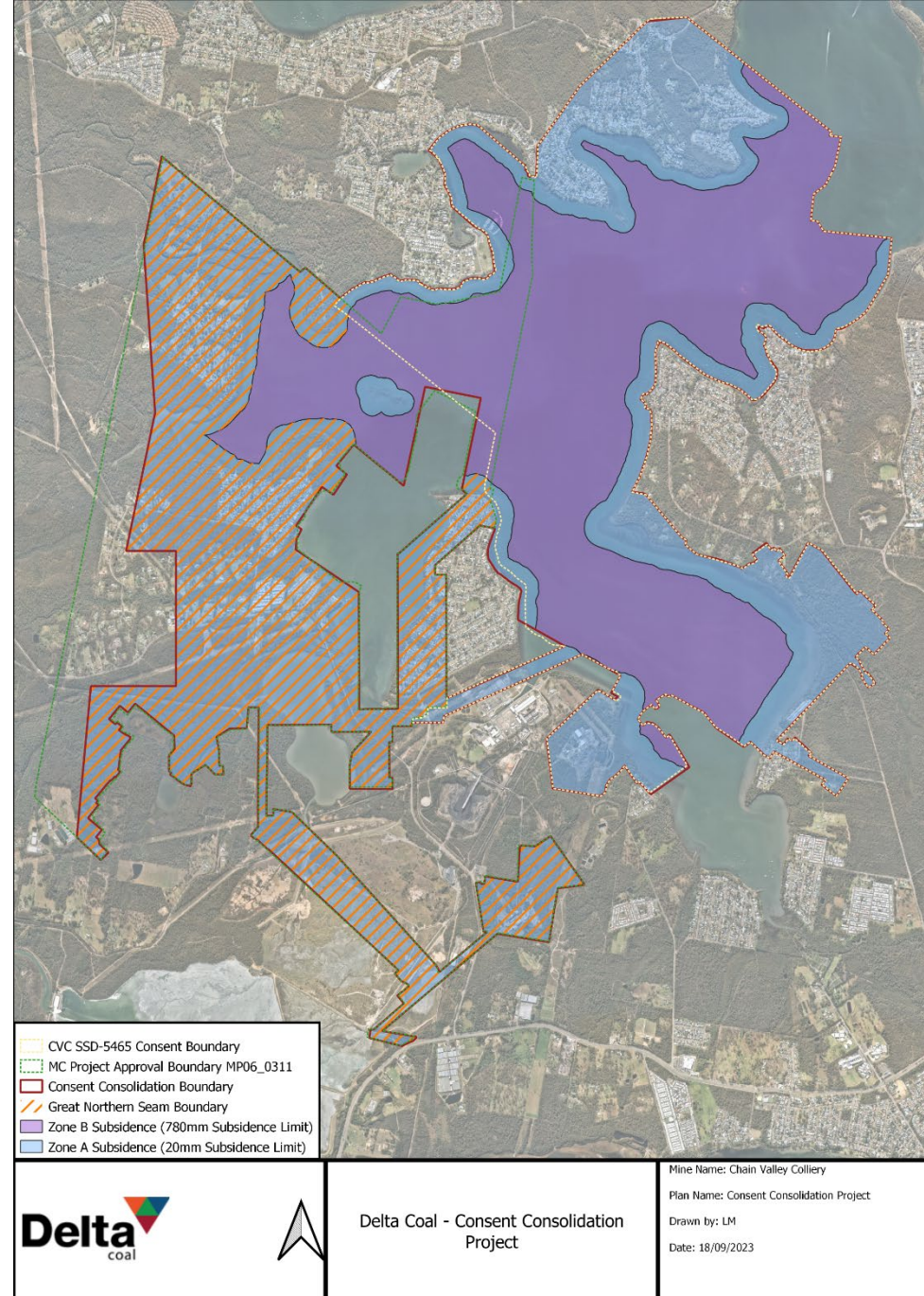
- EPL1770: Environmental Protection License - October 2023
 - EPL 1770 variation to remove effluent management conditions approved by EPA.
- CVC SSD-5465 (MOD 4): Development Consent – August 2021
- Extraction Plan: MWS5 and NPA – March 2021

Mannering Colliery

- EPL 191 – Mannering Colliery – April 2021
- Mannering Colliery Project Approval PA 06_0311 (MOD 5) – June 2020

CONSENT CONSOLIDATION PROJECT

- Meeting with Independent Expert Advisory Panel for Mining (IEAPM) on 24 October. Independent subject matter experts contracted by DPE to review subsidence and greenhouse gas.
- Subsidence, Noise and Air Quality – requests for further information made by the department with responses provided by Delta Coal.
- DPE preparing assessment report on project
- Independent Planning Commission review forecasted early 2024



ENVIRONMENTAL INCIDENTS / NON- COMPLIANCES

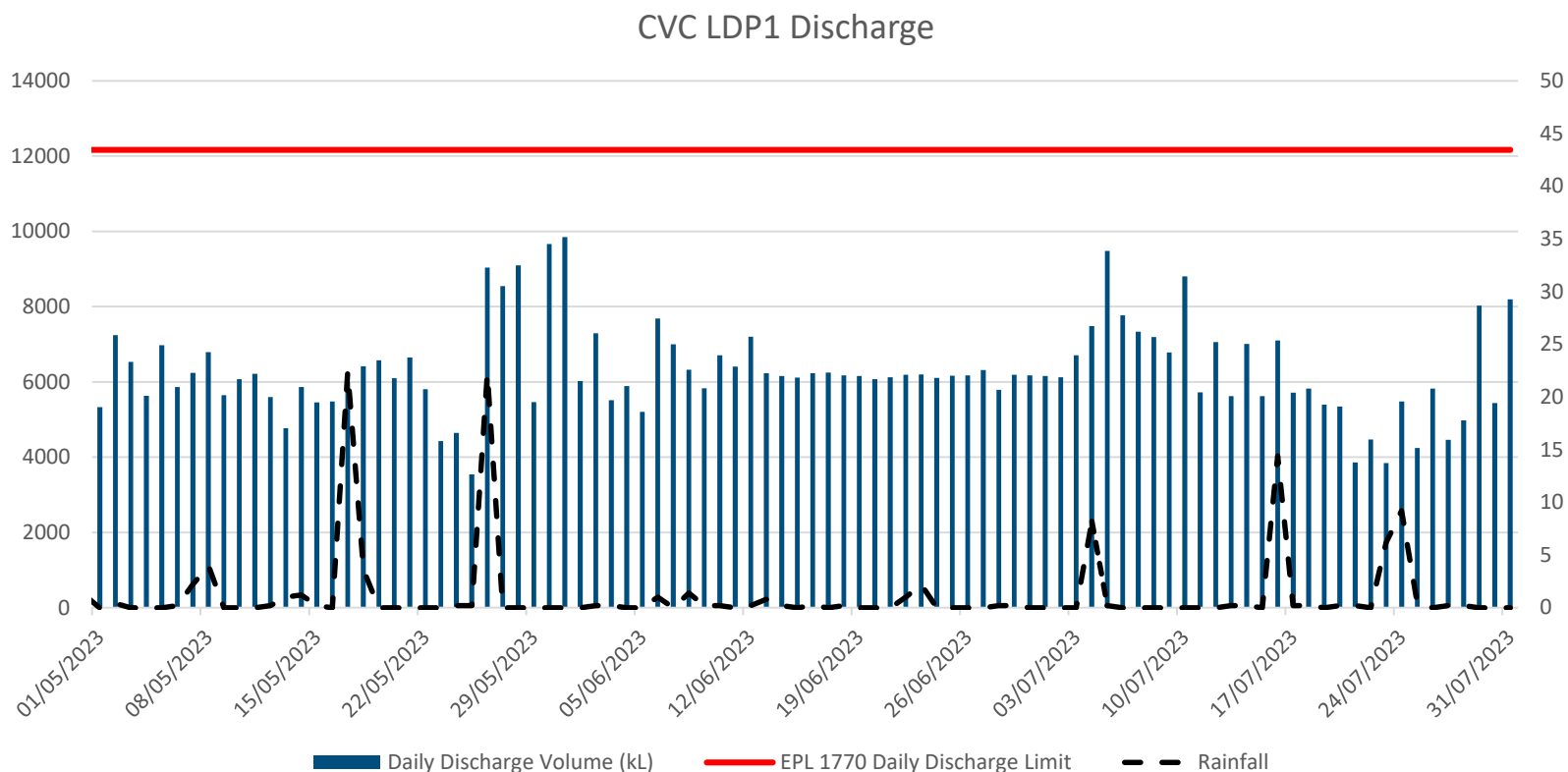


Summary of Incidents and Non-compliances

Site	Date	Incident / Non-compliance Type
CVC	04 Aug – 04 Sep 2023	<p>Exceedance to the maximum total increase in deposited dust level at DDG001. The 12 month rolling average result remains below the annual limit of 4g/m² /month.</p> <p>Cause of the incident was contamination of the dust gauge.</p>



CVC Surface Water Daily Discharge and Rainfall Volumes



ENVIRONMENTAL PERFORMANCE

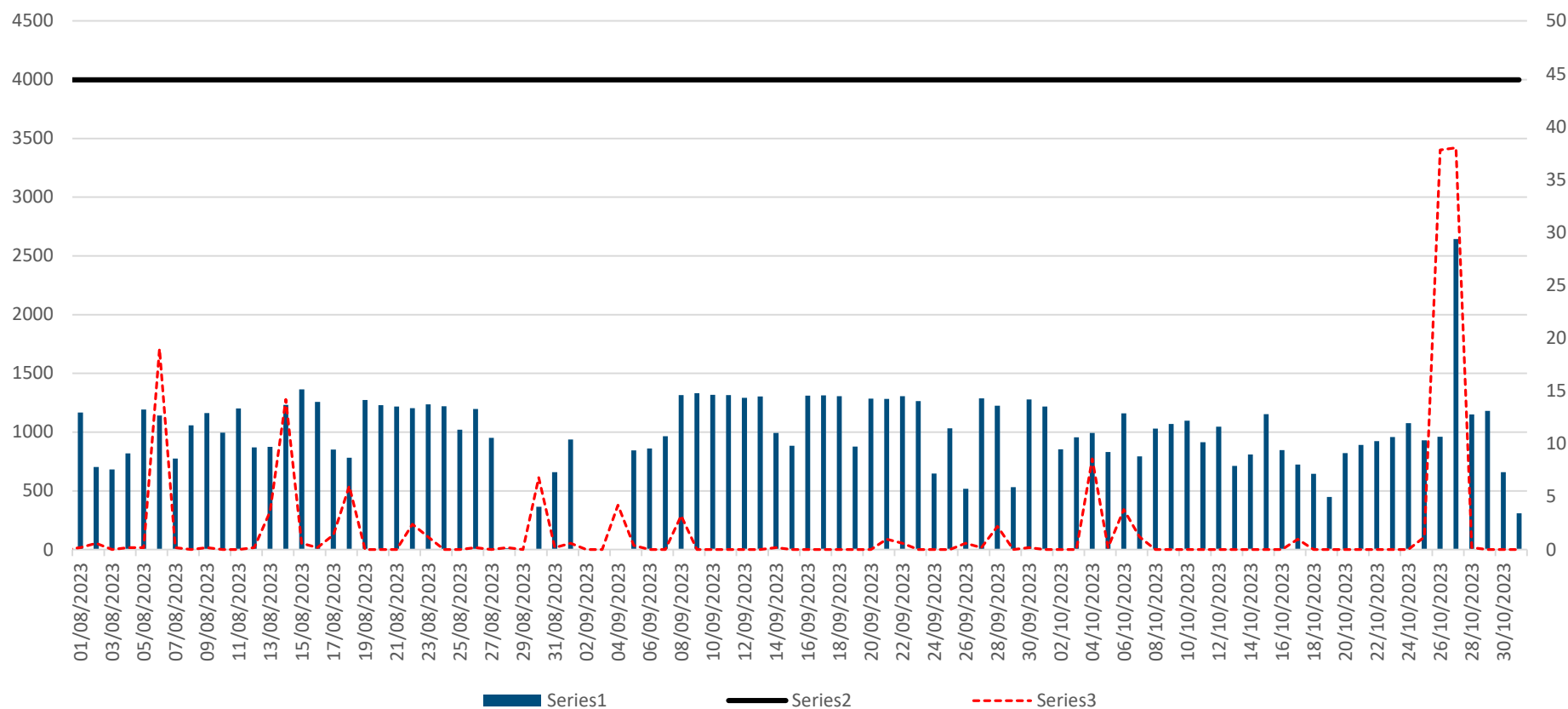


CVC Surface Water Quality Monitoring

LDP1	Limits	Aug – 2023	Sep - 2023	Oct - 2023
Faecal Coliforms (CFU/100ml)	200	45	180	120
Enterococcus CFU/100ml	40 Primary Contact (NHMRC 2008) 150 Secondary Contact (NHMRC)	9	4	30
pH (pH Units)	6.5-8.5	7.74	7.66	7.72
Total Suspended Solids (mg/L)	50	<5	<5	<5
Oil and Grease (mg/L)	10	<5	<5	<5

MC Surface Water Daily Discharge Volume and Rainfall Volumes

Mannering Colliery - Surface Water Daily Discharge Volumes and Rainfall



ENVIRONMENTAL PERFORMANCE



MC Surface Water Quality Monitoring

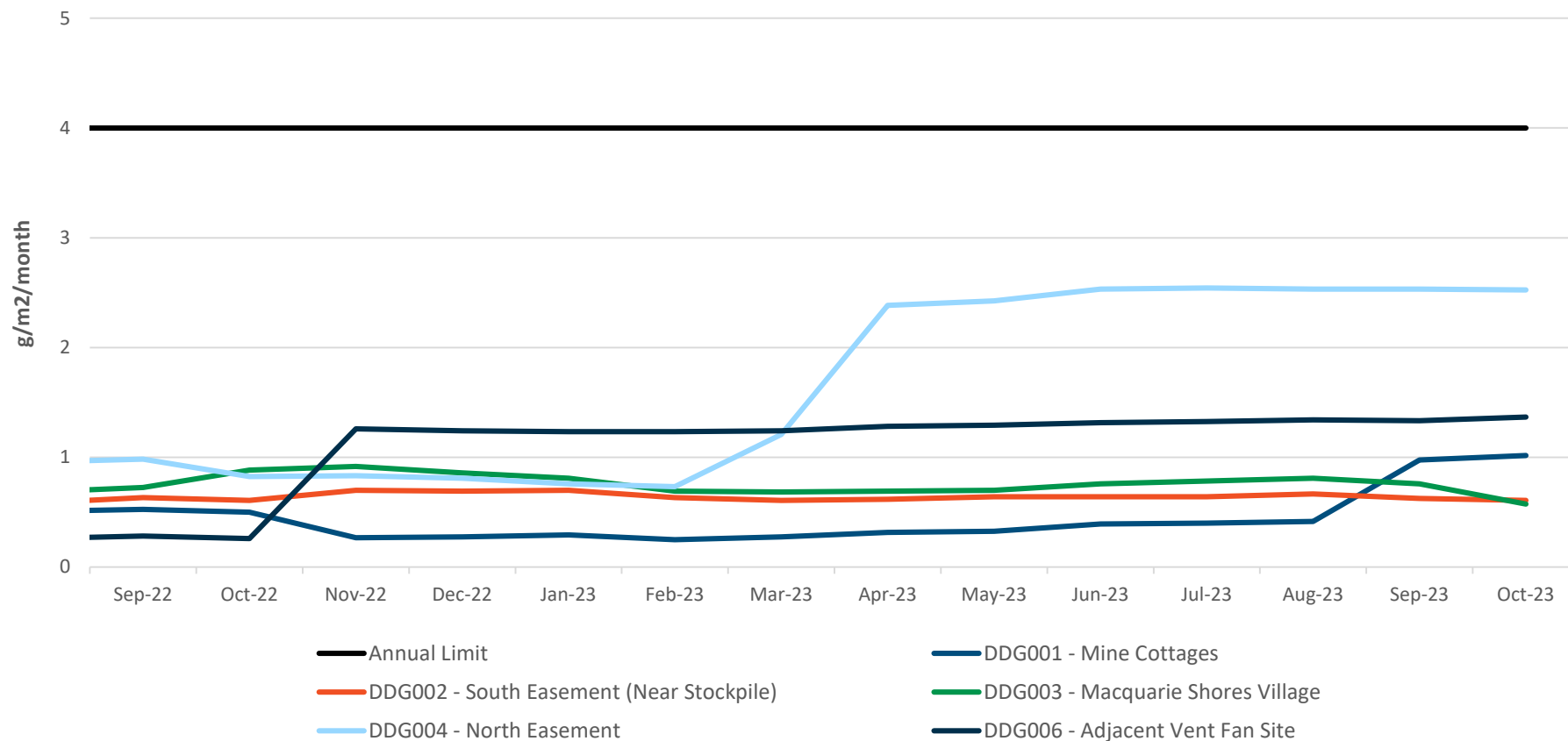
LDP1	Limits	Aug-2023 Average	Sep-2023 Average	Oct-2023 Average
Oil & Grease mg/L	10	<5	<5	<5
TSS mg/L	50	8	9.1	6.9
pH	6.5-8.5	7.97	8.04	7.89

ENVIRONMENTAL PERFORMANCE



CVC Depositional Dust Monitoring

CVC Depositional Dust (12 month rolling average)

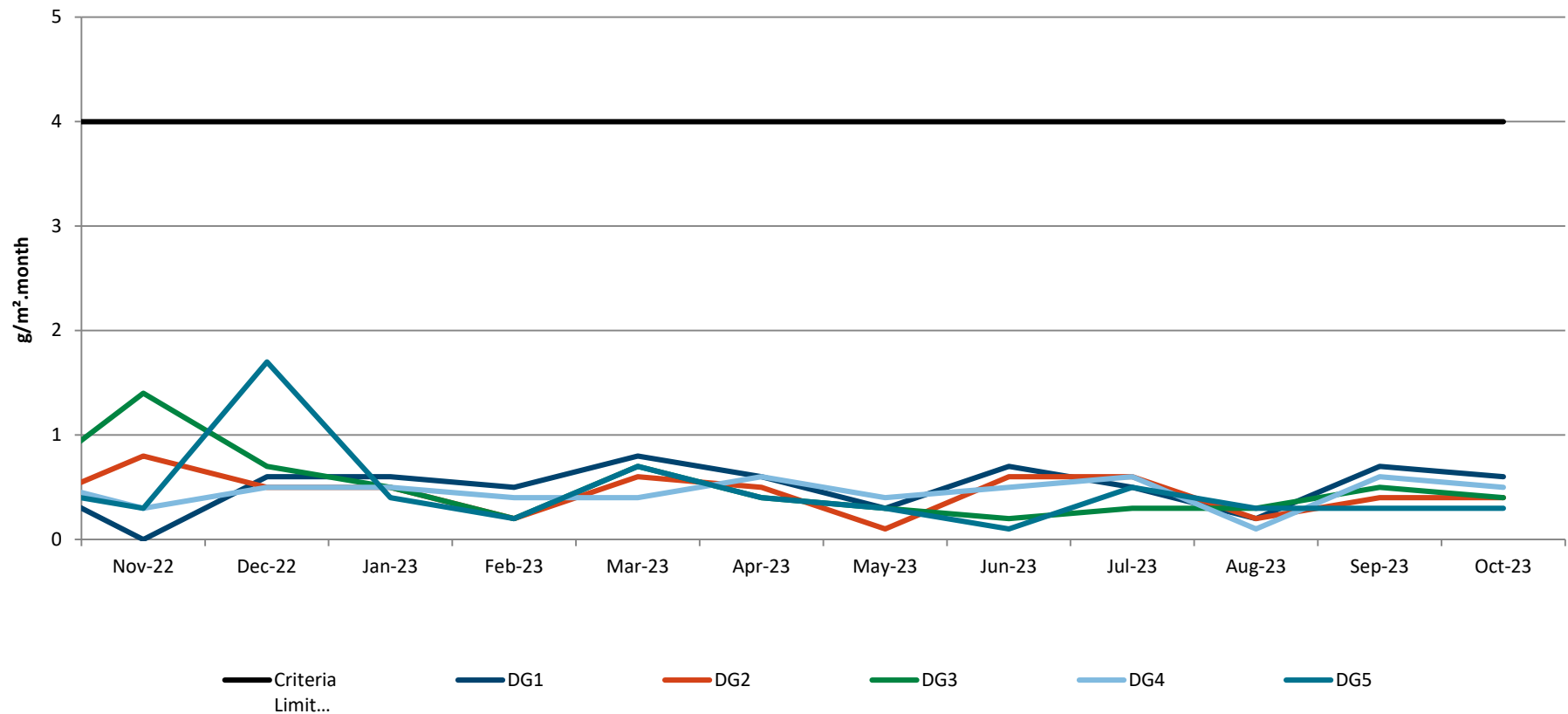


ENVIRONMENTAL PERFORMANCE



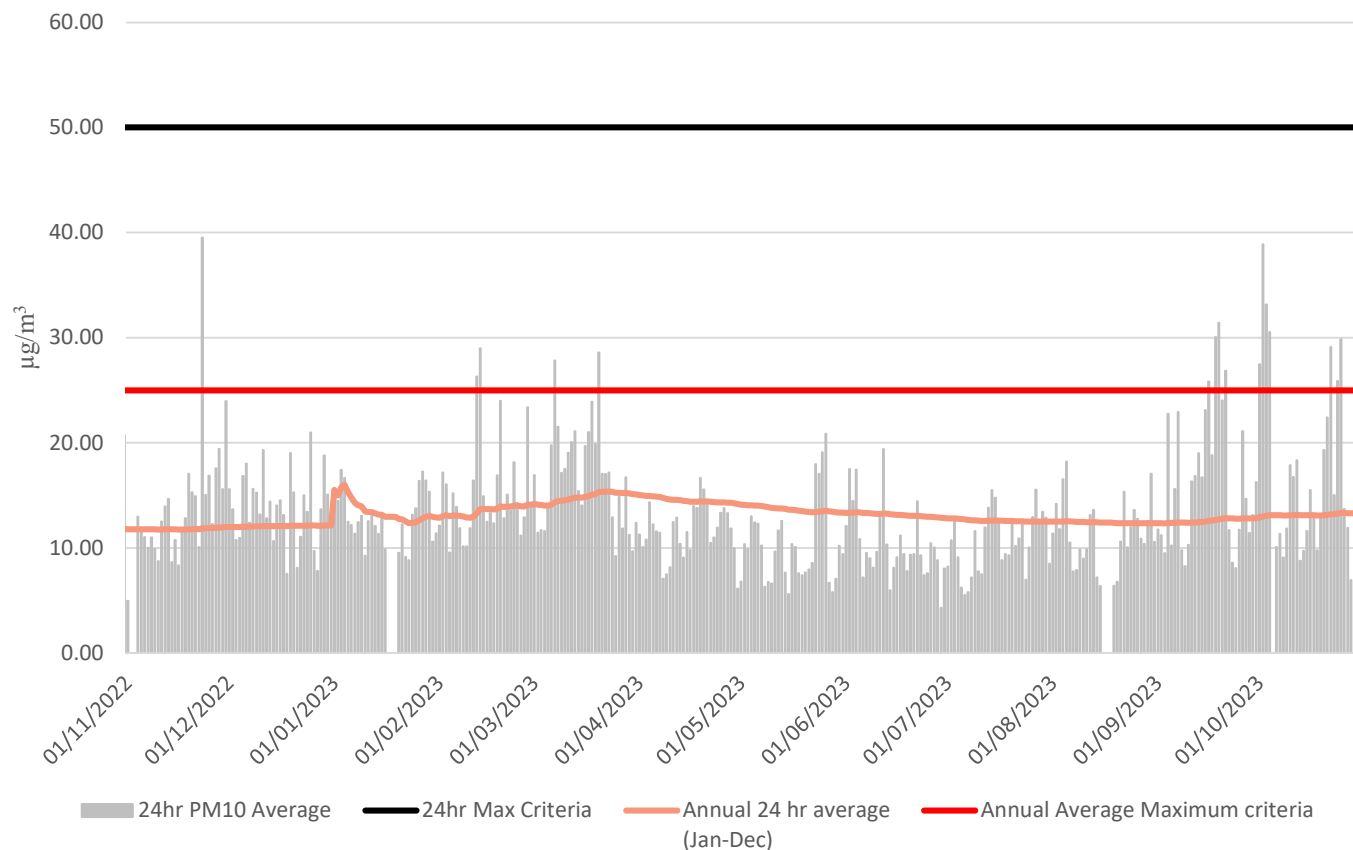
MC Depositional Dust Monitoring

Dep Dust (Monthly Insoluble Solids g/m².month)



PM₁₀ Monitoring

PM₁₀ ($\mu\text{g}/\text{m}^3$) Monitoring (previous 12 months)



No exceedances of the average annual or 24hr criteria have been observed within the last 12 months.

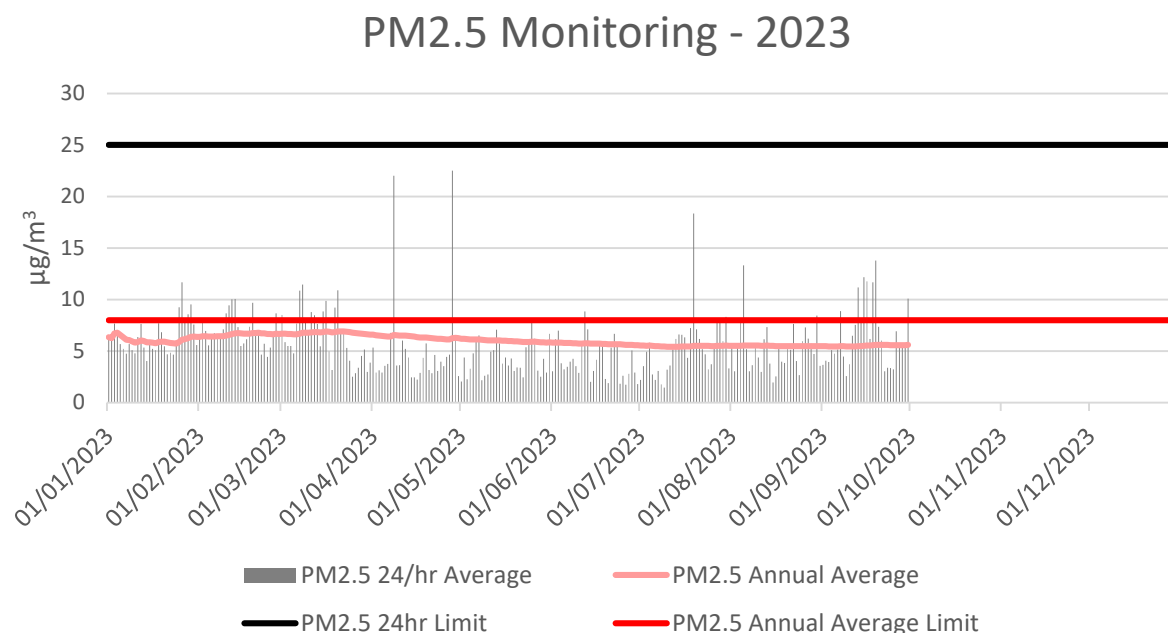
ENVIRONMENTAL PERFORMANCE



PM_{2.5} Monitoring

There were no exceedances of the PM_{2.5} daily average limit year to date.

Data has been delayed by 1 month from VPPS for review by air quality consultant.

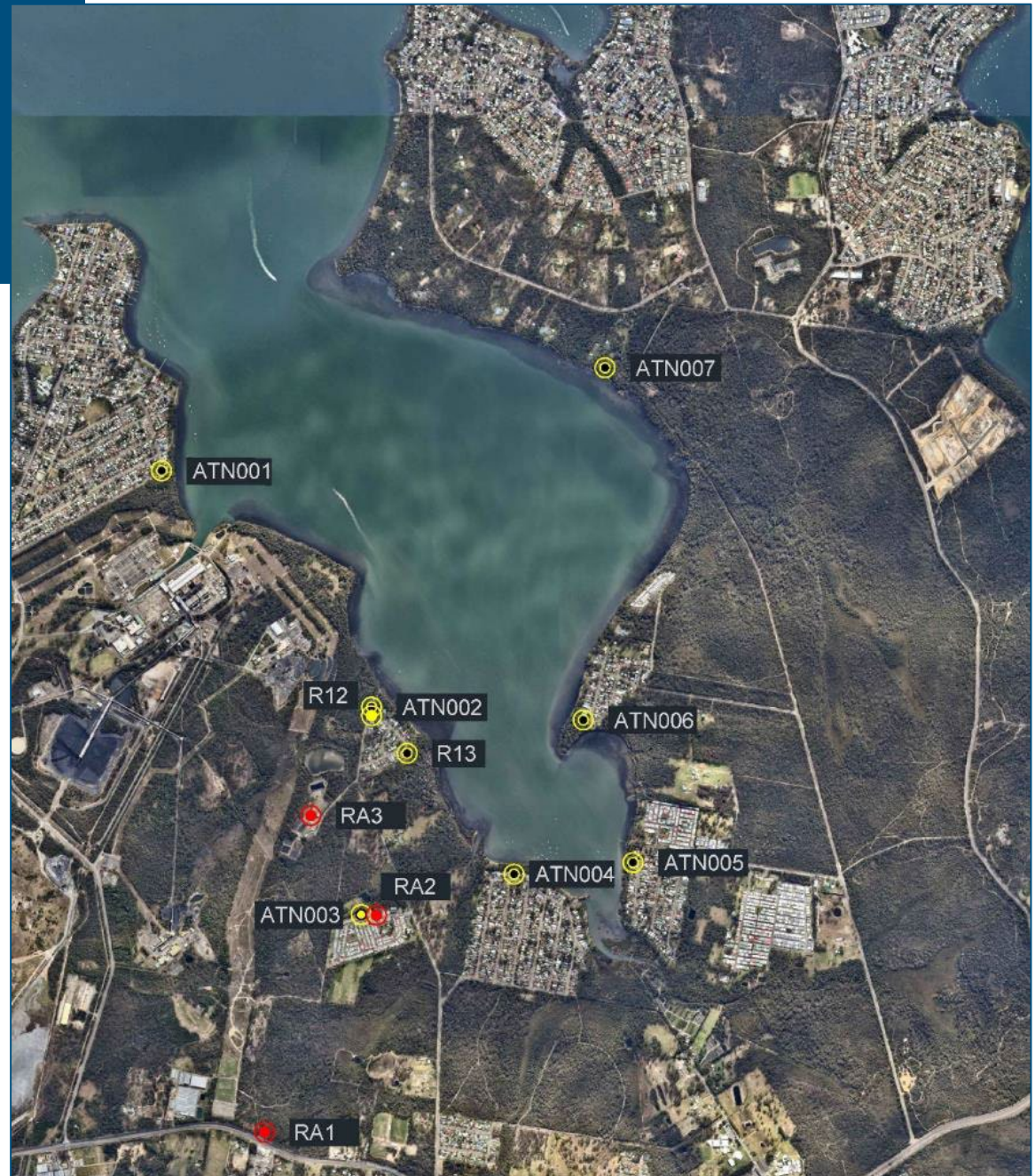


ENVIRONMENTAL PERFORMANCE

Noise Monitoring Locations

Red = MC
Monitoring Location

Yellow = CVC
Monitoring Location



ENVIRONMENTAL PERFORMANCE



Noise Monitoring – MC

No Exceedances for MC noise monitoring between Aug-Sep.

Highest result recorded during monitoring for a location is presented.
Monitoring in Evening (6-10pm) and Night period (10pm onward).
IA = Inaudible.

Location	Date	Site Contributions, dB		Noise Limits, dB		Compliance status
		LAEQ	LAMAX	LAEQ	LAMAX	
August 2023						
RA1	16/08/2023	IA	IA	36	46	☑
RA2		IA	IA	40	45	☑
RA3		IA	IA	39	49	☑
September 2023						
RA1	13/09/2023	IA	IA	36	46	☑
RA2		IA	IA	40	45	☑
RA3		IA	IA	39	49	☑
October 2023						
RA1	18/10/2023	IA	IA	36	46	☑
RA2		IA	IA	40	45	☑
RA3		IA	IA	39	49	☑

ENVIRONMENTAL PERFORMANCE



Noise Monitoring – CVC

Chain Valley Colliery Q3 2023 noise monitoring was undertaken on the 13, 14 and 15 September 2023.

The highest result for each monitoring location during the monitoring period is presented.

Monitoring Point	Site Contributions, dB		Noise Limit		Compliance Status
	LA _{EQ} (15 min)	LAMAX	LA _{EQ} (15 min)	LAMAX	
Chain Valley Colliery Q3 2023 (13, 14 and 15 September 2023)					
ATN001	IA	IA	38	45	☑
ATN002	IA	IA	49	54	☑
ATN003	IA	IA	36	45	☑
ATN004	IA	IA	35	45	☑
ATN005	IA	IA	35	45	☑
ATN006	IA	IA	37	45	☑
ATN007	43 (38+5 LFN)	38	46	46	☑
R12	IA	IA	49	53	☑
R13	IA	IA	43	49	☑

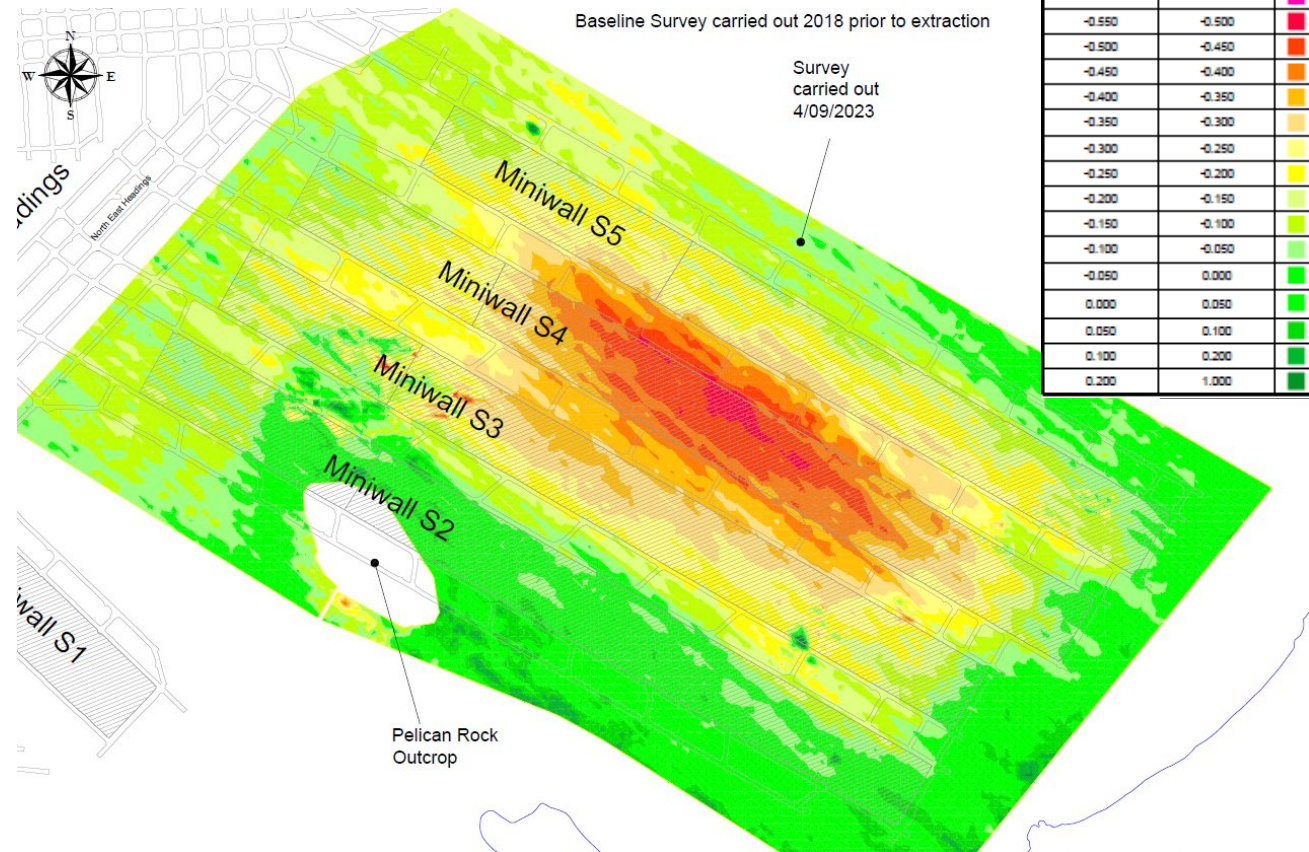
ENVIRONMENTAL PERFORMANCE

De

Subsidence Monitoring

Bathymetric survey of S2-S5 extraction panels in Sept-23. 500mm maximum subsidence observed in line with predictions and within limits.

Quarterly subsidence monitoring undertaken for the northern mining area in September 2023. No exceedances of subsidence limits (20mm) observed.



Community Complaints between 1 August and 31 October 2023:

- Chain Valley Colliery - Nil community complaints received in period.
- Mannering Colliery - Nil community complaints received in period.

General Enquiries between 1 August and 31 October 2023:

- No enquiries received

ENVIRONMENTAL PROJECTS

- MC Sediment Pond Desilting commenced in November.



ENVIRONMENTAL PROJECTS



APZ understory
management around MC
Coal Stockpile in
September.

Predominately removal of
non-native shrub (bitou,
lantana and small pines
and grass management.



MINING COTTAGES REHABILITATION CVC

Annual Rehabilitation monitoring at the CVC former mine cottages in August has indicated that the site has progressed in rehabilitation status from a development phase to a sustainability phase.



Plate 2: View of the rehabilitation area from the western end.



Plate 3: Casuarina glauca and Acacia longifolia sapling growth.

QUESTIONS